

Submittal Data

PROJECT:	UNIT TAG:	QUANTITY:
REPRESENTATIVE: _____	TYPE OF SERVICE:	DATE: _____
ENGINEER:	SUBMITTED BY:	DATE:
CONTRACTOR:	APPROVED BY:	DATE:
	ORDER NO.:	DATE:

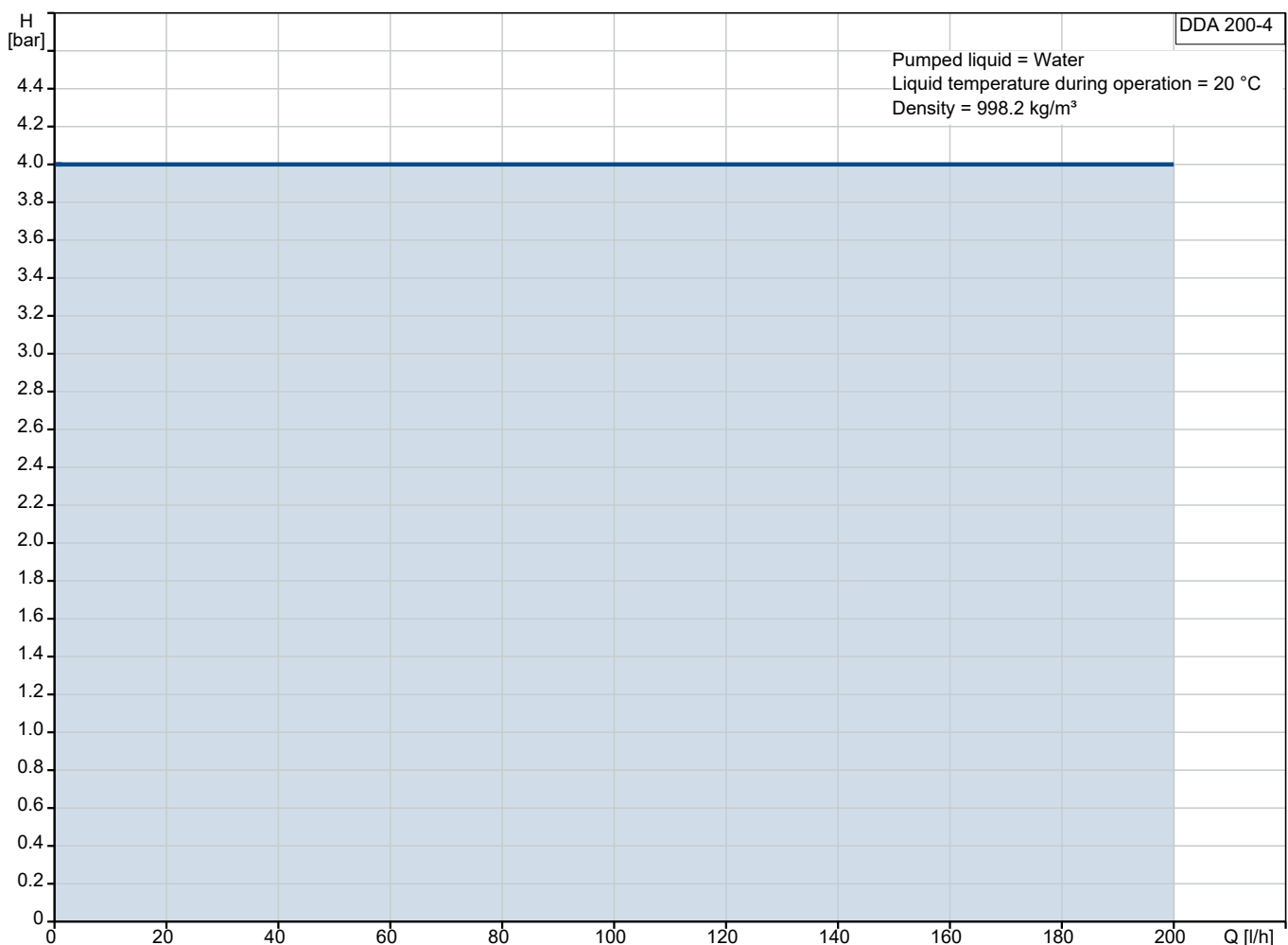
DDA 200-4 AR-PV/T/C-F-31U3U3IG



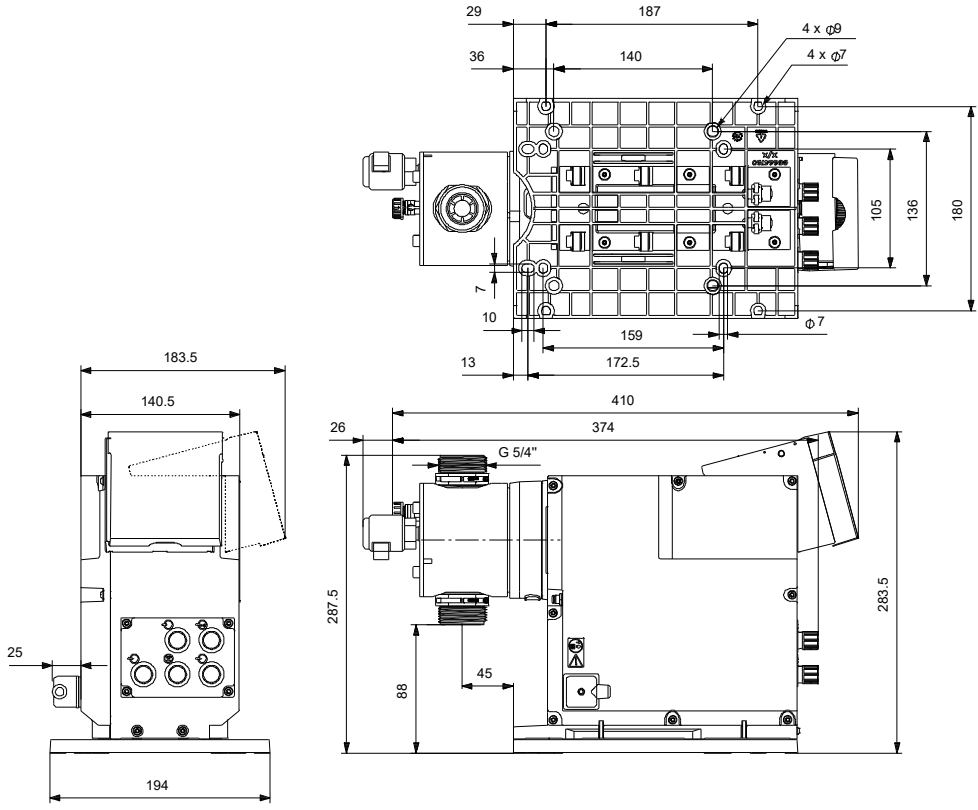
SMART Digital diaphragm dosing pump with internal brushless motor drive. High-end solution for complex and demanding applications (Digital Dosing Advanced).

Note! Product picture may differ from actual product

Conditions of Service		Pump Data		Motor Data	
Liquid:	Water	Maximum operating pressure:	4 bar	Rated voltage:	100-240 V
Temperature:	20 °C	Liquid temperature range:	0 .. 50 °C	Mains frequency:	50 / 60 Hz
Specific Gravity:	1.000	Maximum ambient temperature:	45 °C	Enclosure class:	IP65 / TYPE 4X
		Product number:	On request		



Submittal Data



Materials:
 Dosing head: PVDF (Polyvinylidene fluoride)
 Valve ball: Ceramic
 Gasket: PTFE



Company name:

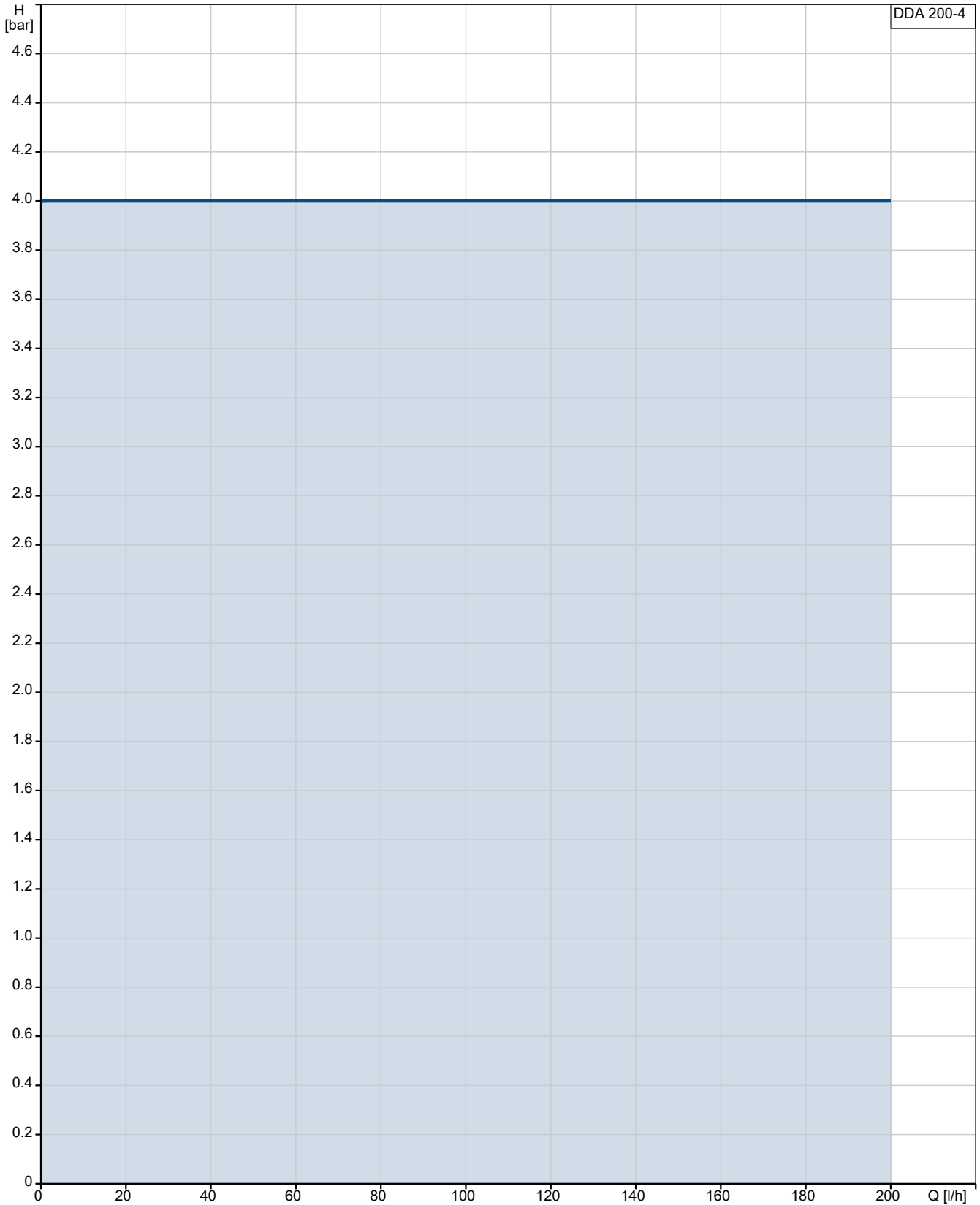
Created by:

Phone:

Date:

13/06/2025

On request DDA 200-4 AR-PV/T/C-F-31U3U3IG

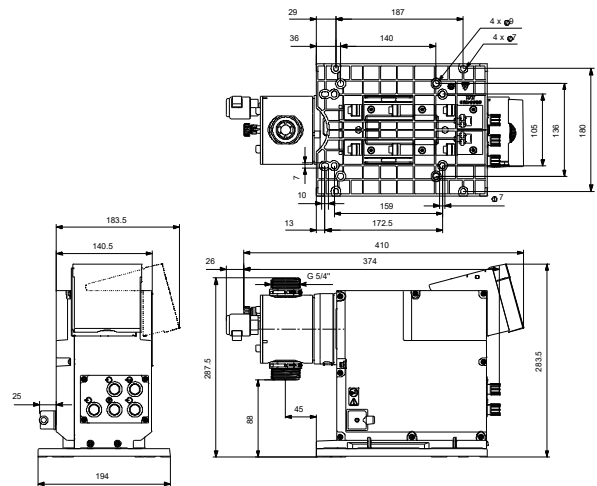
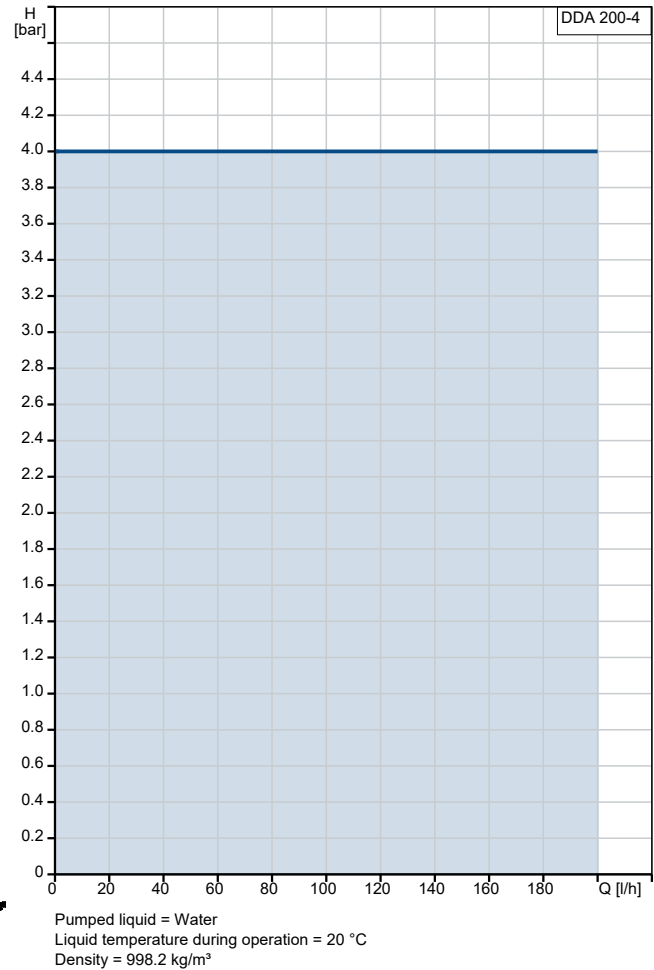


Pumped liquid = Water

Liquid temperature during operation = 20 °C

Density = 998.2 kg/m³

Description	Value
General information:	
Product name:	DDA 200-4 AR-PV/T/C-F-31U3U3IG
Product No:	On request
EAN number:	On request
Price:	AUD 9363
Technical:	
Type key:	DDA 200-4 AR-PV/T/C-F-31U3U3IG
Max. Flow:	200 l/h
Max. flow in slow mode 50%:	100 l/h
Max. flow in slow mode 25%:	50 l/h
Min flow:	250 ml/h
Turn-down ratio:	1:800
Approvals:	CE,CSA-US,NSF61,RCM
Valve type:	Standard
Maximum viscosity at 100 %:	100 mPas
Maximum viscosity in slow mode 50 %:	1000 mPas
Maximum viscosity in slow mode 25 %:	2000 mPas
Accuracy of repeatability:	1.5 %
Materials:	
Dosing head:	PVDF (Polyvinylidene fluoride)
Valve ball:	Ceramic
Gasket:	PTFE
Installation:	
Range of ambient temperature:	0 .. 45 °C
Maximum operating pressure:	4 bar
Installation set (Yes/No):	NO
Installation type:	No installation set
Pump inlet:	Conn.pack U3 (hose ID.19mm &..
Pump outlet:	Conn.pack U3 (hose ID.19mm &..
Max. Suction lift during operation:	3 m
Max. Suction lift during priming:	1.5 m
Liquid:	
Pumped liquid:	Water
Liquid temperature range:	0 .. 50 °C
Selected liquid temperature:	20 °C
Density:	998.2 kg/m ³
Electrical data:	
Maximum power input - P1:	62 W
Mains frequency:	50 / 60 Hz
Rated voltage:	1 x 100-240 V
Enclosure class (IEC 34-5):	IP65 / TYPE 4X
Length of cable:	1.5 m
Type of cable plug:	Australia, New Zealand, Taiwan
Inrush current:	70A at 240V (35A/100V) for 2ms
Controls:	
Control variant:	AR
Control panel:	Front-Mounted
Level control:	YES
Analog input:	0/4-20 MA
Pulse control:	YES
Ext. Stop input:	Yes





Company name:

Created by:

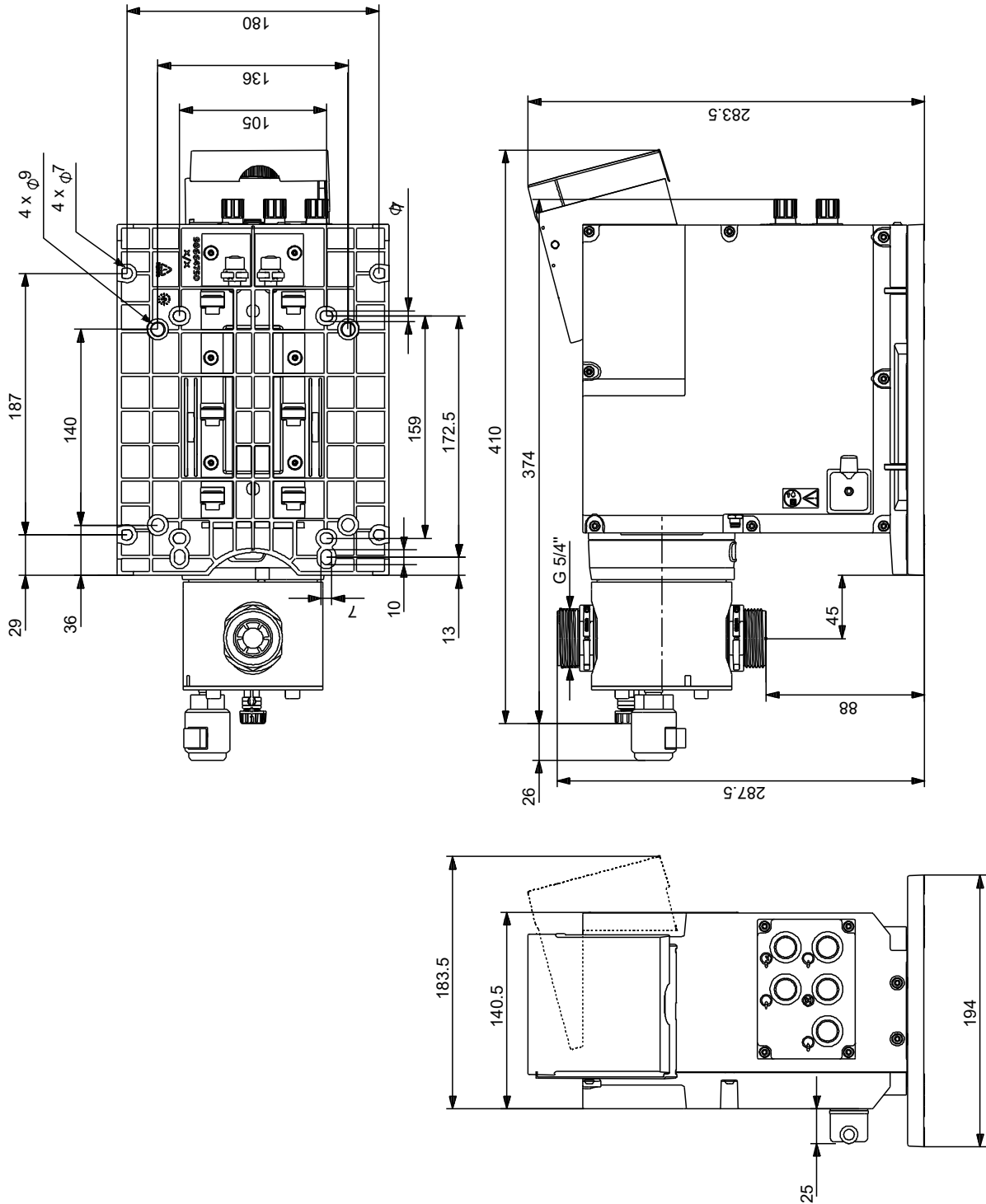
Phone:

Date:

13/06/2025

Description	Value
Analog output:	0/4-20 MA
Output relays:	2
Bus communication:	YES
Others:	
Net weight:	7 kg
Gross weight:	8 kg
Colour:	RED
Country of origin:	FR
Custom tariff no.:	8413509060

On request DDA 200-4 AR-PV/T/C-F-31U3U3IG



Note! All units are in [mm] unless others are stated.
 Disclaimer: This simplified dimensional drawing does not show all details.